

# Romford Arts Festival 2013

---

6th - 13th July

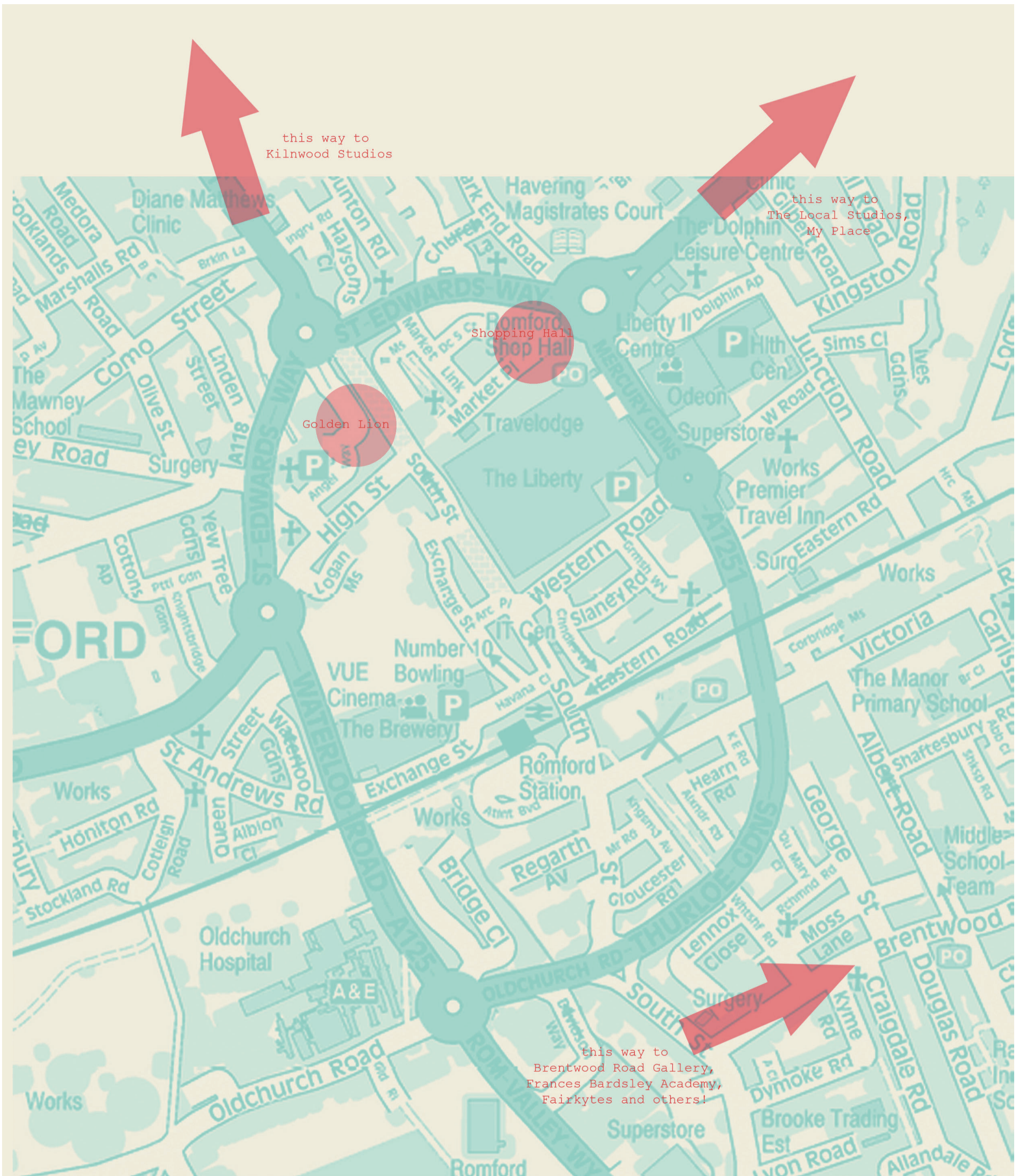
Opening Party 4th July  
The Brentwood Road Gallery 7-9pm



**ROMFORD·ARTS·FESTIVAL**

# Events list

Boundaries Art Group & Your Café “Festival of Colour”	The Local Studio Artists	////
Romford Shopping Hall, 3 Market Pl, RM1 3AB	“POST MARCH”	Kirsty Packer
6th – 13th July	My Place, 343 Dagnam Park Dr, RM3 9DJ	The site around The Brentwood Road Gallery, Frances Bardsley Academy, RM1 2RR
////	6th – 13th July	6th – 13th July
School Stories Project	////	////
Romford Shopping Hall	After Work Art Club	Your Café
6th – 13th July	Fairkytes Art Centre, Billet Lane, Hornchurch	Tea, Coffee and Making!
////	8th July 5-6.30pm	The Brentwood Road Gallery, Frances Bardsley Academy, RM1 2RR
Avelon Road Centre Art Group	////	10th July 9am-12pm
Romford Shopping Hall	The Little Studio in the Woods.	////
6th – 13th July	Ceramics and Paintings	Boundaries Art Club Drop-in session
////	Kilwood Studios, No. 3 Kilwood Lane, Havering-atte-Bower, RM4 1PE	The Brentwood Road Gallery, Frances Bardsley Academy, RM1 2RR
Richard Packer. Expressionist Artworks	6th – 13th July	11th July 12-2pm
Ziggi’s Hairdresser, Romford Shopping Hall	////	////
6th – 13th July	Art on Railings- School Stories Project	Romford Contemporary arts Pro- gramme
////	At various schools in the borough in- cluding Frances Bardsley, Chafford School, Whybridge Junior & St. Peters	See website for more information <a href="http://www.wearercap.co.uk/">http:// www.wearercap.co.uk/</a>
ArtEst	8th – 13th July	6th – 13th July
“New Work”	////	////
The Golden Lion, 2 High St, RM1 1HR	6th form Students at Frances Bardsley Academy	Bobby Sayers - The Weather Gallery
6th – 13th July	“Inbetween”	The Brentwood Road Gallery and around town! See the Brentwood Road Gallery Facebook page for more infor- mation.
////	The Brentwood Road Gallery, Frances Bardsley Academy, RM1 2RR	////
The Local Studios	Opening Party 4th July 5-7pm	////
Art Fest Closing Party	Ongoing 6th – 12th July	The Great Under-acknowledged Women of History Project!
104 Petersfield Avenue, Harold Hill, RM3 9PH	////	Drawing project for the Big Draw 2013
13th July	The No Collective	Ongoing projects taking place all over! Workshops at the Brentwood Road Gallery- See the Brentwood Road Gallery Facebook page for more infor- mation
12pm 'til late (Party starts at dusk!)	The Brentwood Road Gallery, Frances Bardsley Academy, RM1 2RR	
////	4th July 7-9pm	



Please see articles for each exhibition for full venue and contact details

# Art Clubs, Cafes, Collaborations!

## Boundaries Art Group & Your Café "Festival of Colour" Exhibition

Since February 2013 The Boundaries Arts Group have been meeting weekly at The Brentwood Road Gallery to explore the theme "Festival of Colour"

We have experimented with a variety of techniques and materials, all using colour as our starting point. The group have worked both individually on pieces and collaboratively, exploring what it mean to be a creative community.

All the work produced will be available to view at **Romford Shopping Hall 6th-13th July Monday-Saturday 9.30am-5pm.**

Contact Pauline on 01708 734 826 or [Pauline.Oakley@riverside.org.uk](mailto:Pauline.Oakley@riverside.org.uk) for further details about the group.

## Boundaries Art Club Drop-in Session

Every Thursdays, between 12.30 and 2pm, The Boundaries art group takes place. During this time we look at and explore specific projects in response to either the current exhibition at The Brentwood Road Gallery or specific themes or techniques that the group want to develop.

On **Thursday 11th July** the group will be a free for all! join us at The Brentwood Road Gallery, Frances Bardsley Academy, Brentwood Road, RM1 2RR experiment with colour, make some art! EVERYONE is welcome.

Contact Denise on 01708 447 368 or [dhickey@francesbardsley.havering.sch.uk](mailto:dhickey@francesbardsley.havering.sch.uk).

## Your Cafe - Tea, Coffee and Making!

Your Café is a partnership between The Brentwood Road Gallery and Riverside Housing Association. Initially started on one day a week and run by local volunteers, staff and service users of Riverside supported housing project "The Boundaries" it offers a community café open to the public.

Alongside your tea or coffee visitors to the café can participate in informal art projects currently including collecting and illustrating our favourite recipe stories!

We are also offering support to newly graduated artists who wish to gain experience of working with groups and running workshops to try out their ideas, and with the support of the your cafe visitors and volunteers, figure how best to approach their projects. These sessions are all offered free of charge and are open to all members of the community.

Join us on **Wednesday 10th July 9am-12pm** at The Brentwood Road

Gallery during Romford Arts Festival to find out more about this collaboration, get involved or just some tea, coffee and making!

Contact Denise on 01708 447 368 or [dhickey@francesbardsley.havering.sch.uk](mailto:dhickey@francesbardsley.havering.sch.uk) or Pauline on 01708 734 826 or [Pauline.Oakley@riverside.org.uk](mailto:Pauline.Oakley@riverside.org.uk) for further details about the group.

## The Great Under-acknowledged Women of History Project!

Following on from The Brentwood Road Gallery's being awarded the Big Draw 2012 NADFAS Highly Commended award They are now announcing Their bigger than ever drawing project for 2013! To celebrate the forthcoming "Suffragettes and The Art of Social Change" which takes place at the gallery From September -December people are being invited to contribute a drawing of Women they feel should be more greatly acknowledged. The Drawings will be exhibited during Big Draw Month.

Now is your chance to get started! get together a group discuss and draw! This is an ongoing project which can take place anywhere! your living room, The street, Your school or work! **There will be workshops at the gallery during the Romford Arts Festival, keep an eye on The Brentwood Road Gallery Facebook page for more information.**

## After Work Art Club

The Havering after work art club was set up three years ago by a group of colleagues. The aim was to set up a regular, relaxed and supportive setting in which to make art after work. The group meets at **Fairykites Art Centre, Billet Lane, Hornchurch** every Monday. It is a mixed ability group who work on their own individual projects but share enthusiasm and encouragement. On Monday 8th July there will be an open session where anyone can come along, see what they do and even have a go! If you enjoy the group you can sign up to become a regular member.

Contact Chris Peckham on [cpeckham@hotmail.co.uk](mailto:cpeckham@hotmail.co.uk) to find out more.



after work art club

# Opening Party...

## Opening...

On Thursday 4th July 7-9pm at The Brentwood Road Gallery, Frances Bardsley Academy RM1 2RR will be the launch party for this years Romford Arts Festival. Everyone is welcome! come along to find out more about the events and exhibitions taking place. At the launch you can get involved in participatory art events from Kirsty Packer and performance by The NO Collective. You will also have the opportunity to view The Brentwood Road Gallery Romford Arts Festival exhibition.

## Inbetween - FBA End of Year Show

Inbetween is an exhibition of work by 6th form students at Frances Bardsley Academy. The show promises a broad range of artwork in a variety of media from painting and drawing to photography, film and sculpture.

## The NO Collective

'NO' is a social collective that bases its performative and participatory artworks around investigating micro-cultures, introducing humorous artwork to a mass of seemingly un-interested viewers; by using familiarity and stereotypes, and often games, 'NO' is keen to widen the understanding of contemporary art mediums and open the mind to subjects that are close to home.

For the past year The No Collective have been exploring and collaborating with Romford Town to form the basis of their work, and welcome viewers to celebrate their love of Romford with them.

If you would like more information on the upcoming performance, or if you would like to watch some of the previous works The NO Collective have made, please visit our website: [www.thenocollective.co.uk](http://www.thenocollective.co.uk)

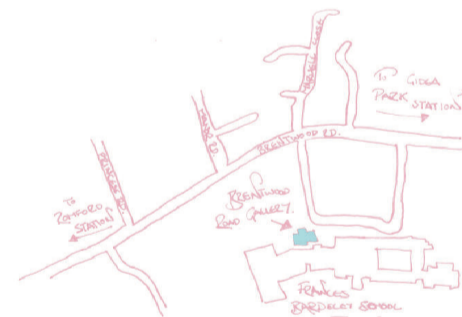
Contact [info@thenocollective.co.uk](mailto:info@thenocollective.co.uk) for further information

## Kirsty Packer

Kirsty is an Installation artist working within an outside space to explore the aspects of negative space and human's

interactions the with natural space.

You will find Kirsty within the grounds of The Brentwood Road Gallery and Frances Bardsley Academy, please come and have a chat!



Hand drawn map to The Brentwood Road Gallery by The NO Collective



The NO Collective



FBA 6th form show at The Brentwood Road Gallery

# Art on Railings - Schools Project

For 2013 to assist schools to participate The Brentwood Road Gallery has devised an "Art on Railings" project and produced a learning resource sent, free of charge to all schools in the area, exploring the concept of *stories*.

The Art on Railings exhibitions will be available to view at different points through out the festival. Please contact your local school or [dhickey@francesbardsley.havering.sch.uk](mailto:dhickey@francesbardsley.havering.sch.uk) for more information.

Schools across the borough are participating! including:

The Chafford School

Lambs Lane South, Rainham, Essex, RM13 9XD

[www.thechafford.havering.sch.uk](http://www.thechafford.havering.sch.uk)

////

Frances Bardsley Academy

Brentwood Road, Romford, RM 1 2RR

[www.francesbardsley.havering.sch.uk](http://www.francesbardsley.havering.sch.uk)

////

Whybridge Junior School

Blacksmiths Lane, Hornchurch, Essex RM13 7AH

[www.whybridge-jun.havering.sch.uk](http://www.whybridge-jun.havering.sch.uk)

////

St. Peter's Catholic Primary School

Dorset Ave, Romford RM1 4JA

////

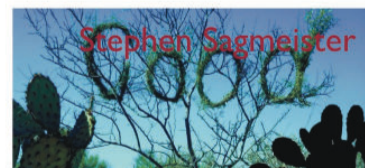
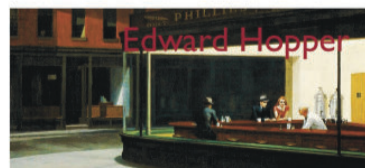
Plus more to come! keep an eye on your local school gates and The Brentwood Road Gallery Facebook page for more participating schools. It's not too late to join in! here is the publication sent to schools, give it a go yourselves!

## ART ON RAILINGS ROMFORD ARTS FESTIVAL BRENTWOOD ROAD GALLERY

### Each person creates a story from a memory

Working individually or in pairs each person recalls a memory relating to a specific place. Ask yourself some questions to get the ideas flowing:

- Can you describe the house in which you lived when you were a child?
- Do you remember the room in which you slept as a child?
  - Can you describe the houses in your neighborhood?
- Where was your favorite place to visit when you were a child?
- Where did you go to school? What was in the classrooms?
  - Where did you go to shop for food or clothes?
    - Where did you go for fun?
  - Where did you go when you wanted to hide?
    - Did your family ever move?
- What kind of utensils do you have in the kitchen?
  - Who were your neighbours?
- Are there any unusual characteristics about your place?



### ARTISTS TO RESEARCH



### ART ON RAILINGS

The Brentwood Road Gallery would like to introduce the ART ON RAILINGS schools project 2013 to coincide with this year's Romford Arts Festival, which runs from July 6th to 13th 2013.

We are asking schools to look at the theme of "stories". This can take any form you wish! This booklet is intended to just give you a suggestion or two of what you could do with your group.

The Brentwood Road Gallery at Frances Bardsley Academy Artist in Residence, Denise Hickey is available to book to work with your school, class or teachers to deliver a session. Places are limited and will be allocated on a first come first served basis. Cost will be £25 for 2-hour workshop or £45 for 4-hours. Please complete the attached booking form or contact us at The Brentwood Road Gallery for more information.

Contact us:  
The Brentwood Road Gallery  
Frances Bardsley Academy  
Brentwood Road  
Romford RM1 2RR  
01708 447 368  
[dhickey@francesbardsley.havering.sch.uk](mailto:dhickey@francesbardsley.havering.sch.uk)

### A couple of Ideas...

#### Chose a story with your class.

Have you been reading a book with your class or are they working on a novel/storybook in another subject?

Why not take sections of the book to illustrate?

Try to choose a range of key elements of the book so that when they have finished the viewers might be able to tell the story just using the images.

#### Write your own story as a group

Use a mind map with your group to stimulate ideas.

Why not look at newspaper articles to create a story that looks at a particular moment in local or national history?

### Artists to look at for inspiration!



#### Sophie Herxheimer

Sophie ran a project collecting people's stories about food. She then used these stories to turn into drawings, which were exhibited. The drawings were also to put onto tablecloths where the participants of the project shared a huge feast!



#### Grayson Perry

Grayson Perry, winner of the 2003 Turner Prize, uses the seductive qualities of ceramics and other art and craft forms to make stealthy comments about society including injustices and hypocrisies. He explores a variety of historical and contemporary sociopolitical themes.

**TOP TIP: MAKE A SELECTION OF IMAGES BEFORE SHOWING YOUR GROUP.**

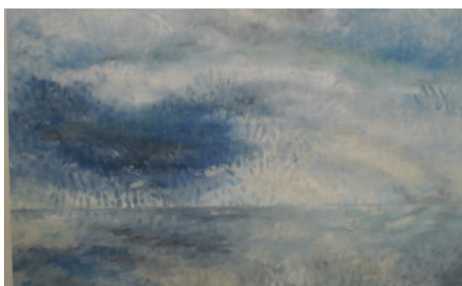
NOT ALL IMAGES FROM THESE ARTISTS WILL BE SUITABLE FOR ALL AGE GROUPS!

# Town Centre and Out of Town Exhibitions

We are delighted to be working with Romford Shopping Hall again this year. The Shopping hall will be home to a variety of different exhibitions through out the Arts Festival.

## Richard Packer

Richard's expressionist art works will be exhibited in Ziggi's Hairdresser located upstairs in The Shopping Hall for the duration of the festival.



Richard Packer painting

## School Stories Project



"Stories in 140 characters"- Chafford School Art on Railings Project

A selection of work from each school will be transformed into posters and exhibited in the public areas around The Shopping Hall.

Some of the other exhibits you will be able to see include paintings by James Quinn, Michael Kinsella and Paul Kelsey. Keep an eye on The Brentwood Road Gallery Facebook page for images and more information. Pop down to the shopping hall at 43 Market Pl, Romford, Essex RM1 3AB to see the exhibitions first hand!

## The Boundaries Art Club "Festival of Colour"



festival of colour flags

Work ranging from textile resist techniques, pinhole photography, paper mache, collaborative drawing and painting all exploring the theme of colour will be spread throughout the shopping hall and available to view from 6th- 13th July.

## ArtEst "New Work" exhibition at The Golden Lion

Local artist collective ArtEst will be exhibiting their new work at The Golden Lion Pub in Romford Town centre. The exhibition has been sponsored by MERCURY SERVICE STATION, Harold Wood, 2-4 Fitzilian Avenue, Harold Wood, RM3 0QS Tel: 01708 342810

Exhibition available to view 6th-13th July during opening hours.

Contact Doreen Bright at doreenbright@talktalk.net for further information.

## The Little Studio in The Woods

Tucked away at Kilnwood Studios, 3 Kilnwood Lane, Havering-atte-Bower, RM4 1PE is an exhibition by Jean Cairns, Richard Packer and members of his Art Group. The show will include ceramics and paintings. Definitely worth a visit! and lots of free parking spaces. The studio will be open 1 pm - 6.30pm daily, 6th - 14th July (Closed Monday) contact Jean on 01708 769196 or at kilnwoodstudios2000@yahoo.co.uk

## POST MARCH at My Place

'MyPlace' based in Harold Hill is for the first time exhibiting the work from artists and designers of 'The Local Studio', Petersfield Avenue. A fantastic carbon neutral space, providing a range of facilities. MyPlace offers classes and workshops for the community providing plenty of scope to show the growing talent of these Contemporary artists residing within Havering. The show named POST MARCH aims to deliver a dynamic exhibition concentrating on contemporary new works made at the Local Studio. Using varying disciplines, the exhibition aims to show the dynamic wealth of talent and community spirit of

the locale.

Open during the arts festival 6th-13th July.

you can find My Place at 343 Dagnam Park Drive, RM3 9DJ

Contact Kirsty on kirstypacker@gmail.com for further information and opening times outside the festival.



# Watch out!



ROMFORD CONTEMPORARY ARTS PROGRAMME

## Romford Contemporary Arts Programme

We've reached the moon, we've broken the sound barrier, and we've even managed to topple the X Factor from Christmas number one. Us people can do incredible things. Does this mean we're now ready for a real challenge...bringing contemporary arts to Romford?!

Artists, designers, actors, dancers, writers and film makers alike have joined with the London Borough of Havering in a bid to create something a little bit different. The unique thing about this partnership is that whilst the Council actively support the programme, enabling it to develop and grow, they don't try to run it. We are free and absolutely not adverse to taking risks and pushing boundaries. We are happy and willing to challenge existing systems and practices. We want more for Romford. Do you?

Attracted by the bright lights of the big smoke our home-grown creative talent more often than not find themselves emigrating to Hackney and beyond in a bid to stimulate their artistic activities, but is that really necessary? Are you fed up with chasing the big, established names and really want to flex your creative muscles? We can not only offer you a whole host of beauty salons and cash converters but also some meaningful opportunities. Here in Romford we want more than just excellent tea making skills and the ability to file papers in alphabetical order - we're looking for challenging individuals; those of you who aren't afraid to push forward new ideas and get your hands dirty doing so. We're looking for active members of a new community, not passive interns who fall into line quickly and quietly.

If you want a creative community, a challenge or just a chat please get in contact with me, Sarah Walters at [sarahwalters@wearercap.co.uk](mailto:sarahwalters@wearercap.co.uk)

Watch the RCAP website for information about their arts festival events! [www.wearercap.co.uk](http://www.wearercap.co.uk)

## The Weather Gallery

Artist Bobby Sayers will be bringing The Weather Gallery to Romford - a with a specially devised pop-up gallery exhibition for the festival. Watch The Brentwood Road Gallery Facebook page for regular updates!

Find out more about Bobby here: [www.bobbysayers.co.uk](http://www.bobbysayers.co.uk)

contact: [bobby@bobbysayers.co.uk](mailto:bobby@bobbysayers.co.uk) for info



Bobby Sayers - Solo show at Mrs Rick's Cupboard (Installation shot left)



# ... and Closing Party

## Closing...

This year Romford Arts Festival will be officially "closed" with a shindig at The Local Studios.

The Local Studios, based in Petersfield Ave, Harold Hill is a small community based art and design studio, with a contemporary ethos on space sharing, affordable hire and voluntary work share. It is currently paid for by the artists and designers that work there, and similarly was refurbished from an abandoned off-license by the group when they moved in less than a year ago.

The studio, located on a strip of shops in Harold Hill contains 8 permanent artist studio spaces on the top floor which take the form of 'traditional' studio spaces, where you have a boundary of space to make work; there is also a shared studio space on the lower ground for up to 18 artists – a space for artists who do not necessarily need a tangible space, however need a place for either socialising with other artists, producing artwork digitally,

using the space as an office or to utilise spaces for event based artworks. We also have WiFi, a yard, off street parking and a kettle!

The cost of renting a studio space ranges from just £15 - £45 a month and comes with the benefits of a friendly gang of studioe'es, a unique artist working environment and access to the studio's social network or artists, designers, students and tutors from the local area.

If you are interested in renting a studio space at 'The Local' or would like some more information about us or hire of the space, please do not hesitate to contact us via the studio manager: [natalie@nataliebaysart.co.uk](mailto:natalie@nataliebaysart.co.uk)

within walking distance of Harold Wood Station plus, free on street parking

Drop on in to see how we work, have a chat with our friendly local artists and participate in a day of studio happenings - you can even pop down the road with us for a greasy fry-up, or knock next door for a fish foot-spa... Its all about 'the local' at our studio!

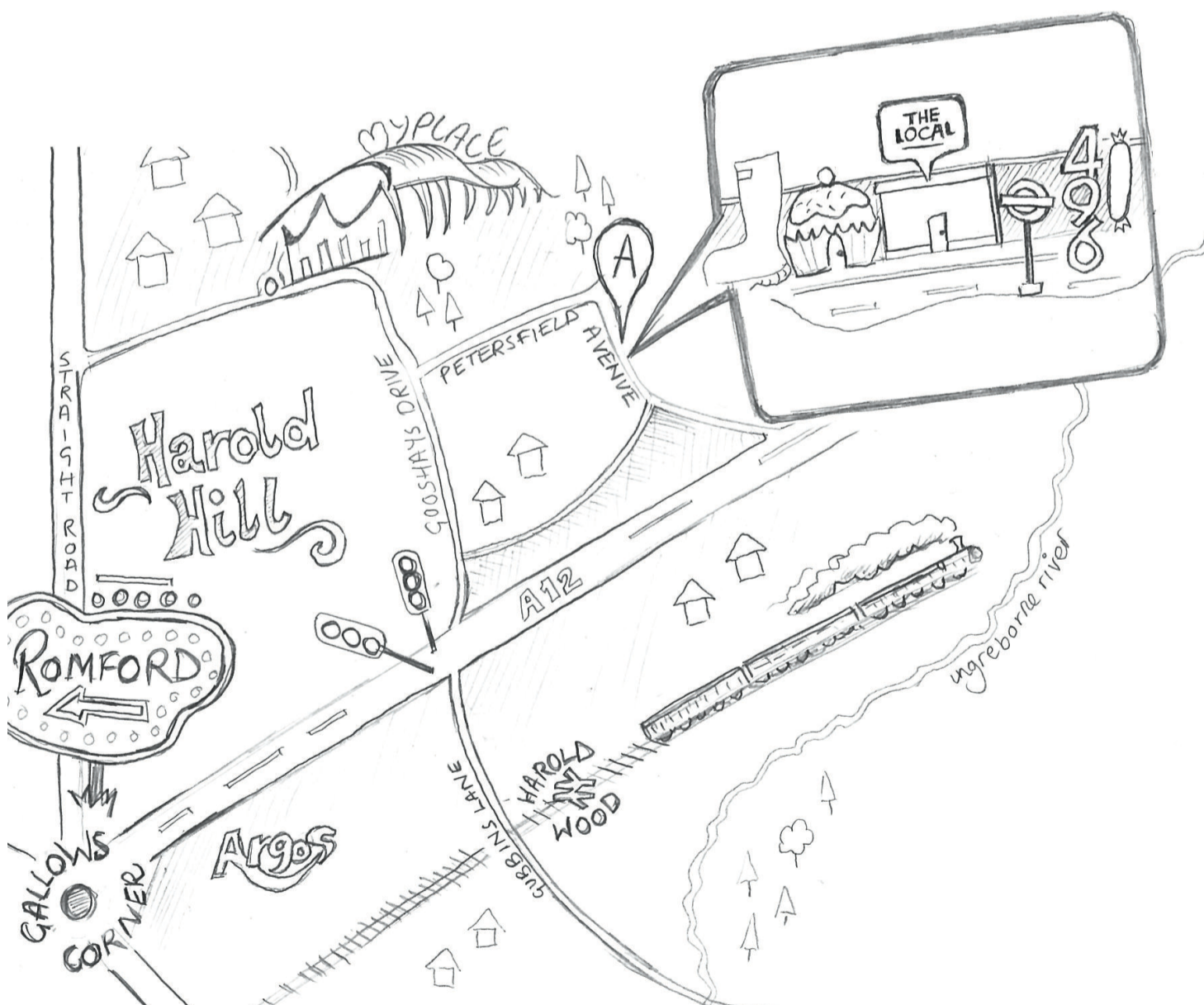
At dusk we will turn the lights down and celebrate the achievements 'Romo style' with a seasonal BBQ, drinks, and some great art-chat.

**Closing event: The Open Offy**

**The Local Studio, 104 Petersfield Avenue, Harold Hill, RM3 9PH**

**12pm 'till late (Party starts at dusk!)**

**Transport:** Bus links from Romford and surrounding areas (inc. 498, 256, 294),



# Venue Addresses

## The Brentwood Road Gallery

Frances Bardsley Academy, Brentwood Road, RM1 2RR

## Romford Shopping Hall

3 Market Place, Romford, RM1 3AB

## Ziggi's Hairdresser

Romford Shopping Hall, 3 Market Place, Romford, RM1 3AB

## The Golden Lion

2 High Street, Romford, RM1 1HR

## The Local Studios

104 Petersfield Avenue, Harold Hill, RM3 9PH

## My Place

343 Dagnam Drive, RM3 9DJ

## Fairkytes Arts Centre

Billet Lane, Hornchurch

## Kilwood Studios

3 Kilwood Lane, Havering-atte-Bower, RM4 1PE

...Dont forget to watch

The Brentwood Road Gallery Facebook page and [www.wearercap.co.uk](http://www.wearercap.co.uk) for updates!

If you need general information about The Romford Arts Festival or any information about The Brentwood Road Gallery please contact Denise Hickey on 01708 447 368 [dhickickey@francesbardsley.havering.sch.uk](mailto:dhickickey@francesbardsley.havering.sch.uk)

---

**draw your under-acknowledged woman from history here  
and send it back to The Brentwood Road Gallery!**

The Big Draw 2013 as part of The SUffragettes and the Art of Social Change  
at The Brentwood Road Gallery September - December 2013

---

Romford Arts Festival Brought to you by

BRENTWOOD ROAD  
GALLERY



**The  
Havering  
Artist  
Community**